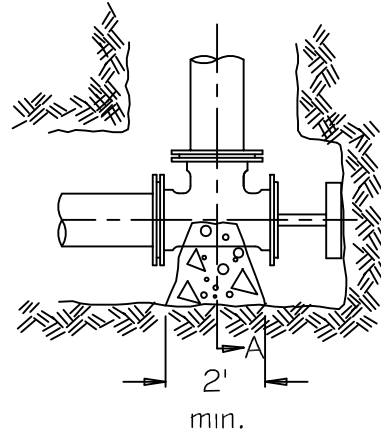
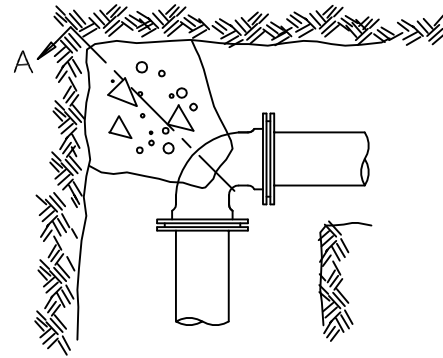
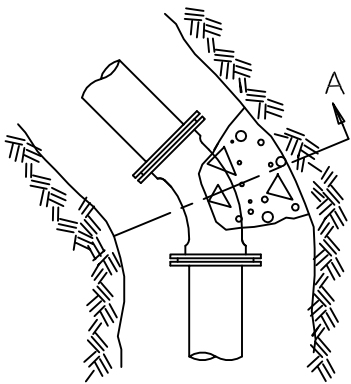


Alt. 1 Precast Block

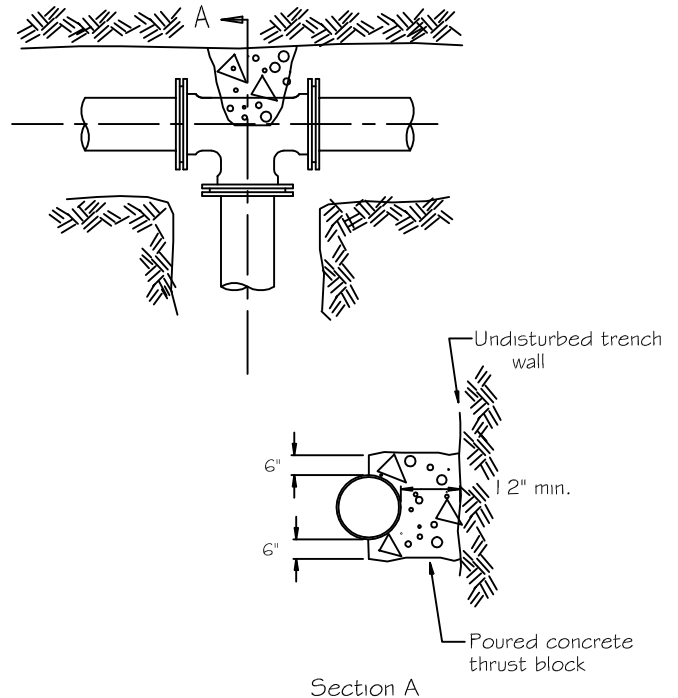


Alt. 2 Brace Plug
Against undisturbed earth



GENERAL NOTES:

1. Thrust blocks shall be made of 12" thick precast concrete blocks or poured in place concrete.
2. Thrust blocks shall be installed at all tees and bends of 11.25° and greater.
3. Thrust blocks shall be installed against undisturbed soil.
4. Concrete shall be 3000 PSI (min.).
5. Poured concrete shall be placed in such a manner that pipe and fittings will be accessible for repairs.
6. All joints requiring thrust blocking shall also use Meg-a-Lug retainer glands.
7. Use of wood materials for thrust blocking is strongly prohibited.
8. All below grade fasteners to be stainless steel:
bolts & threaded rods - grade 304
nuts & washers - grade 300



Section A

NOT TO SCALE

REV:	DATE:
REV: RMS	DATE: FEB 2005
DRAWN BY: VV	DATE: FEB 2005

THRUST BLOCK
INSTALLATION

VILLAGE OF VILLA PARK
WATER-22